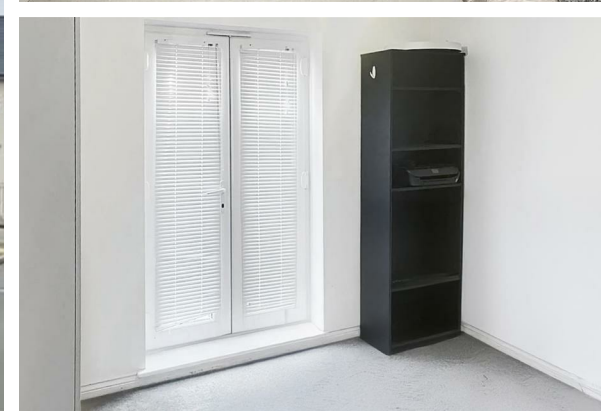
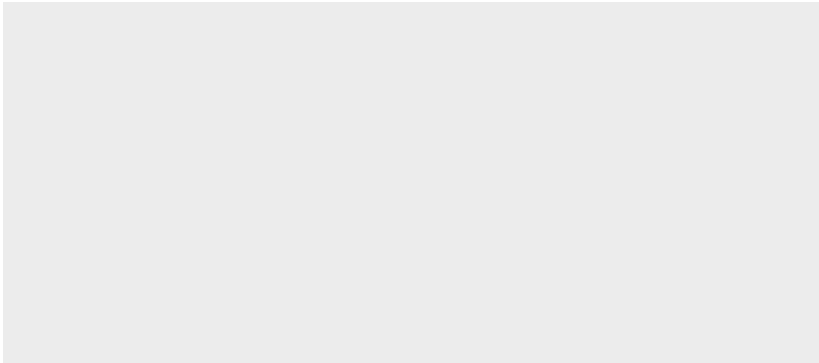


TO LET

65 Chaundler Drive, Aylesbury, Buckinghamshire, HP19 9DP

£950 Per Month





THE PROPERTY

Available immediately is this generously sized first-floor flat, located in the highly sought-after Buckingham Park development. The property boasts a spacious lounge with Juliet balcony, offering plenty of natural light, as well as a large bedroom with its own Juliet balcony. The well-proportioned kitchen/diner provides a comfortable space for cooking and entertaining, while the family bathroom completes the accommodation.

Conveniently situated within walking distance of local shops and bus stops, this property offers a fantastic opportunity for modern living in a vibrant community.

To arrange a viewing please email the agent.

Council Tax Band B

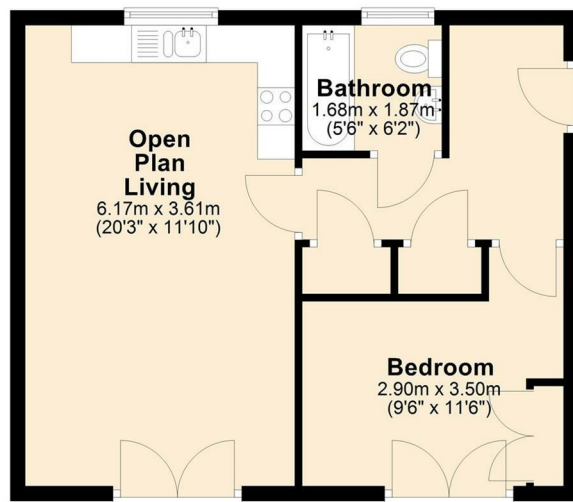
Unfurnished

Deposit: £1096

SITUATION

First Floor

Approx. 45.6 sq. metres (490.3 sq. feet)



Total area: approx. 45.6 sq. metres (490.3 sq. feet)

Directions

Market House Market Sq, Aylesbury, HP1201TN

Tel: 01296 767555 Email: francis@360-properties.co.uk <https://www.360-properties.co.uk>